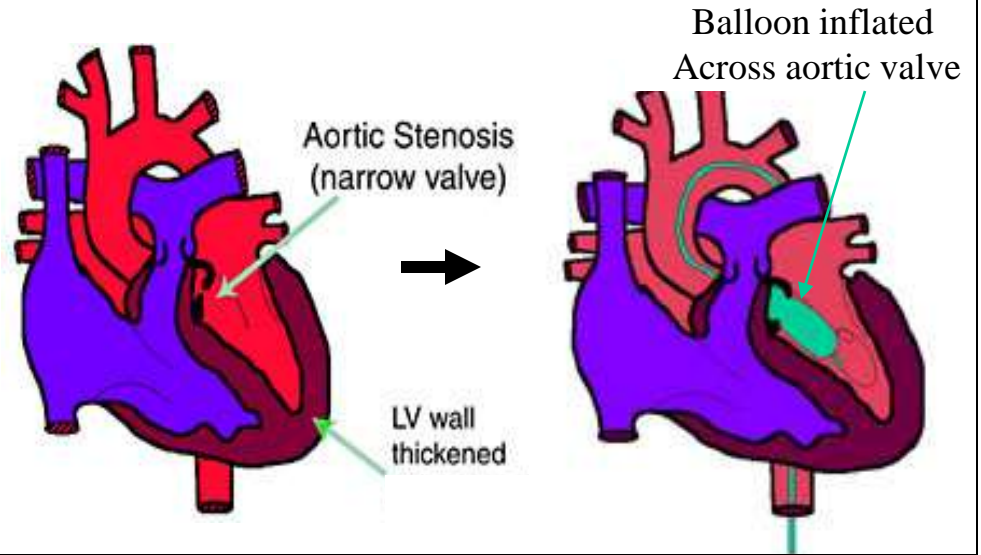
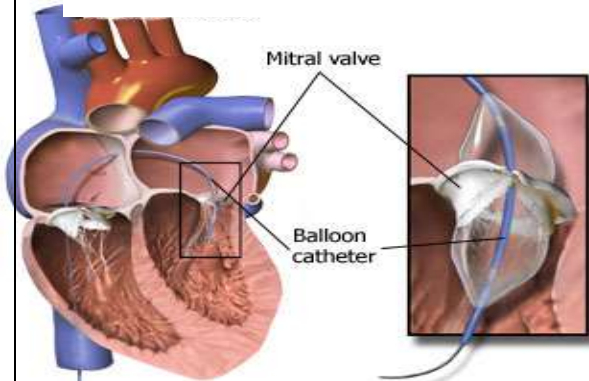


Valvuloplasty is a technique by which special balloon catheters are introduced into the heart to dilate narrowed heart valves via peripheral veins

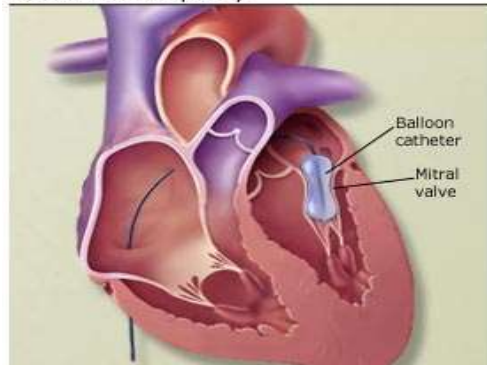
### Balloon Aortic Valvuloplasty



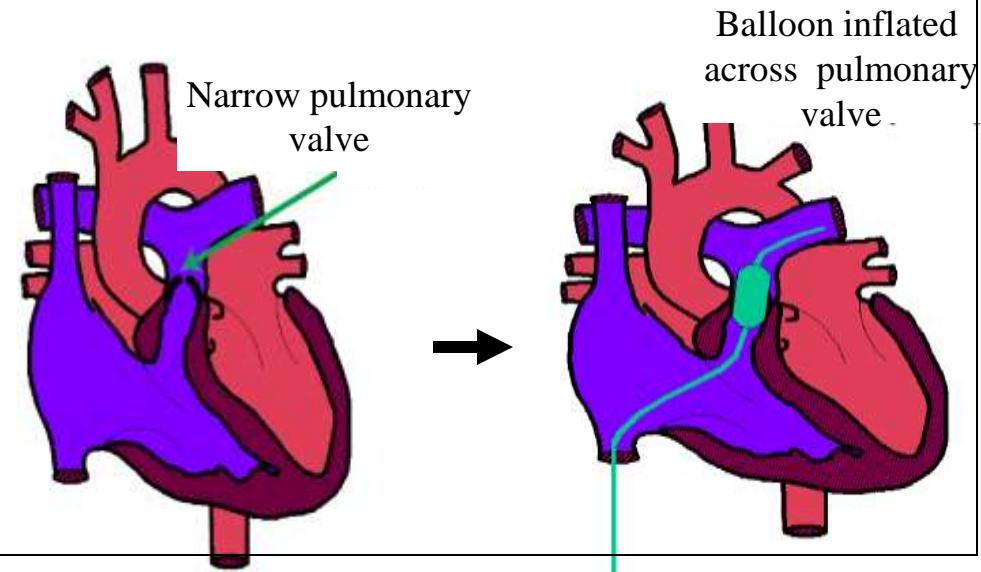
### Balloon Mitral Valvuloplasty



Balloon Valvuloplasty



### Balloon Pulmonary Valvuloplasty



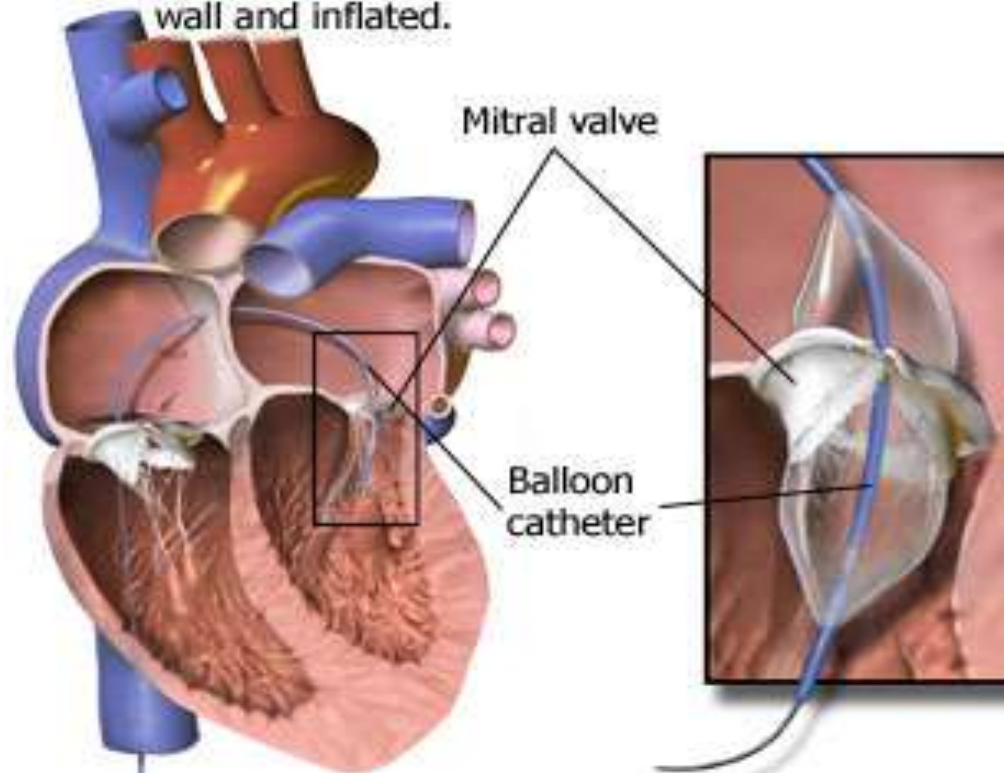
For details contact:

[baluvaidyanathan@aimshospital.org](mailto:baluvaidyanathan@aimshospital.org)

# PTMC

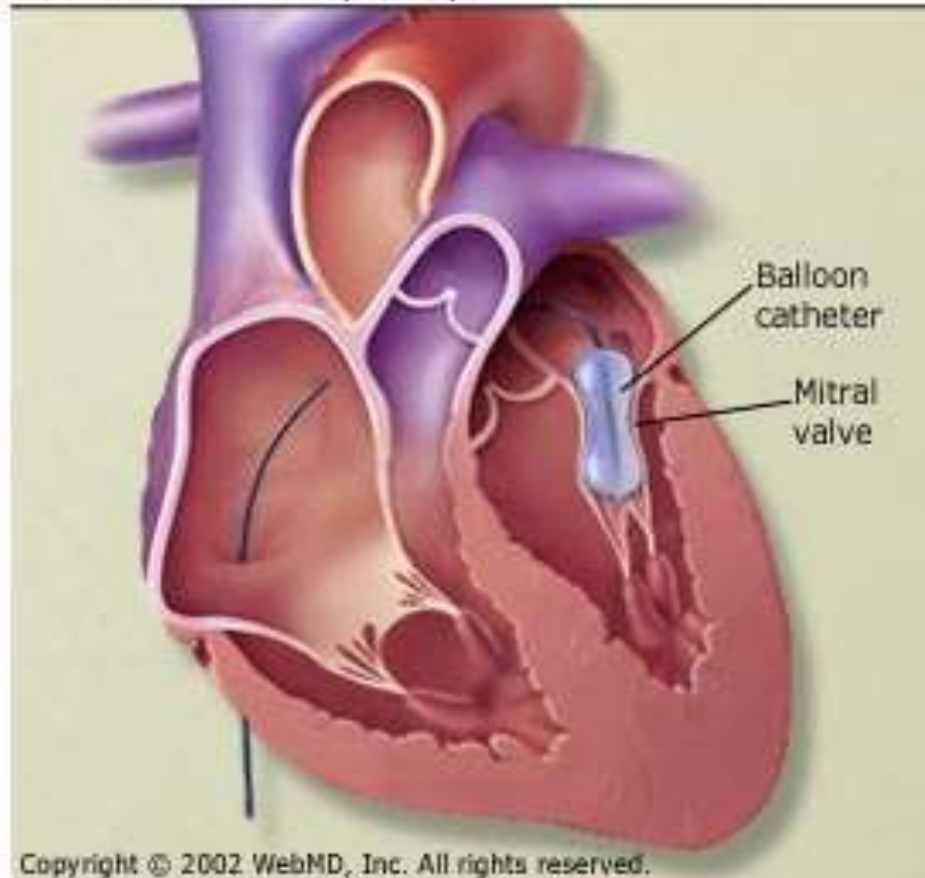
## Valvuloplasty

A procedure to improve blood flow through a narrow valve. A catheter is threaded to the valve through a hole temporarily created in the septal wall and inflated.

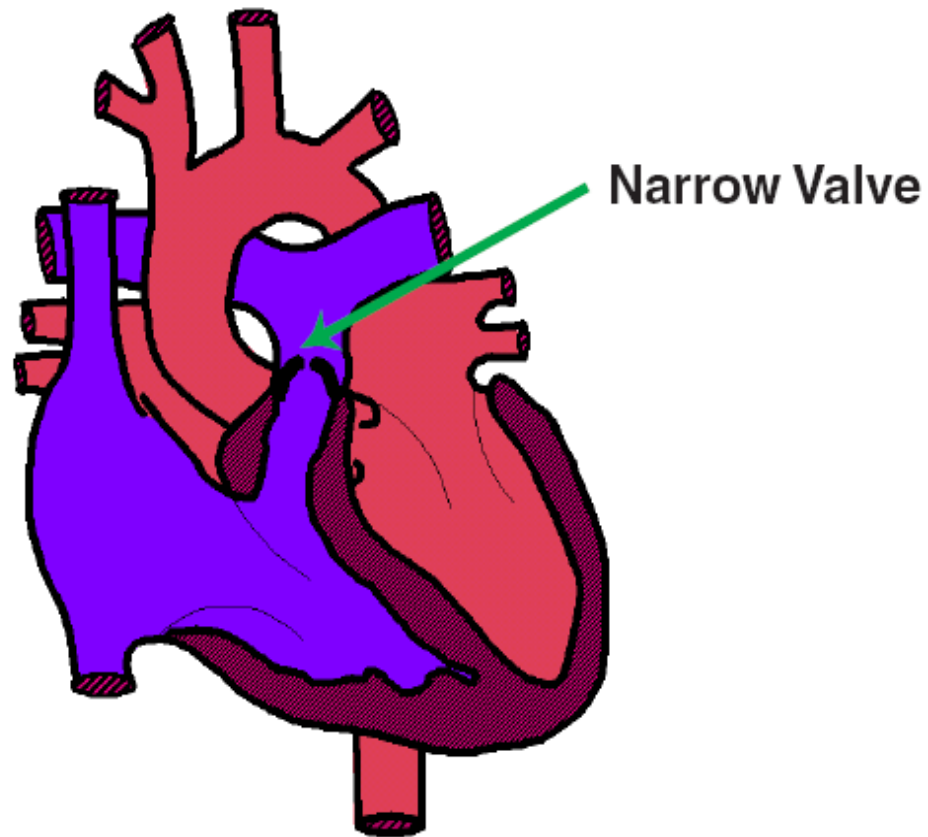


# PTMC

## Balloon Valvuloplasty

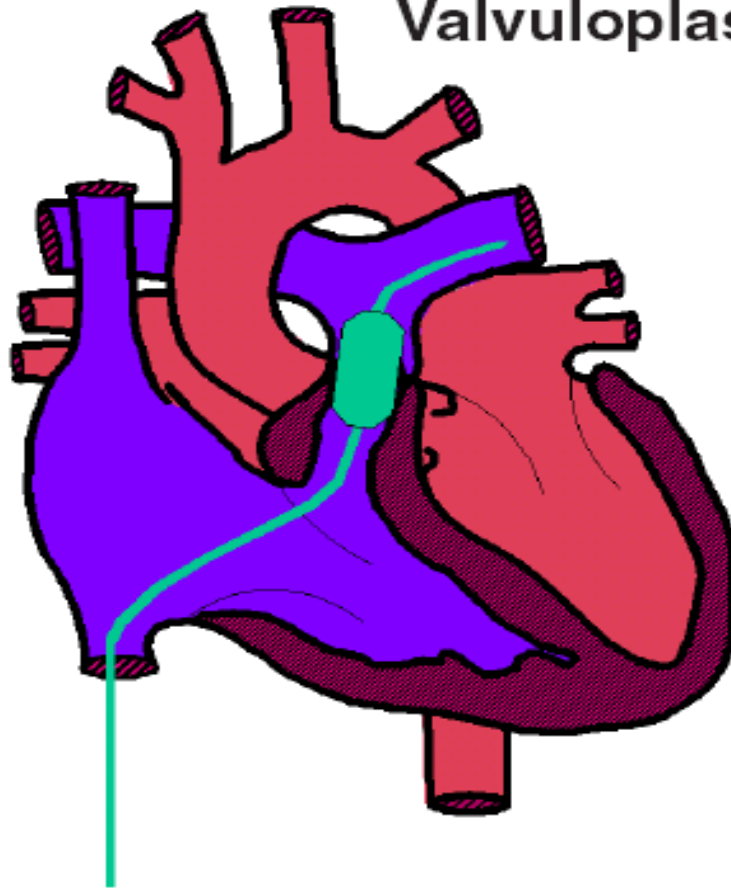


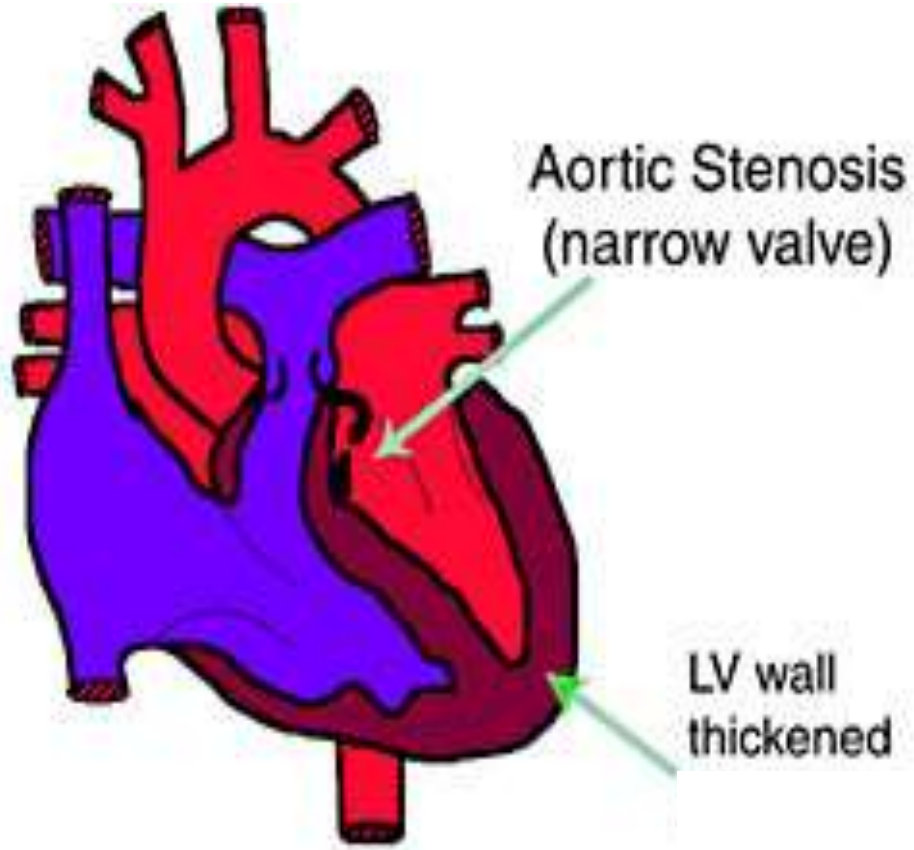
# Pulmonic Stenosis



# BPV

Balloon  
Valvuloplasty





Aortic Stenosis  
(narrow valve)

LV wall  
thickened



# BAV

